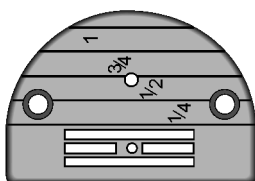


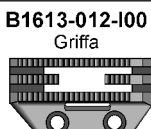
Parti per DDL-555; 5550 ecc. JUKI

Serie: DDL-555; DDL-5550; DDL-5550N; ecc.



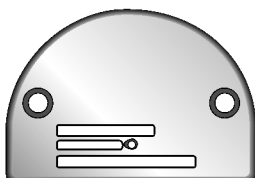
B1109-012-10B
Placca ago standard
(=D1109-555-D01)

SS-2110920-TP
SS-2110915-SP
Viti placca



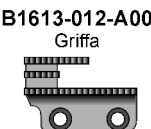
B1613-012-100
Griffa

SS-4080620-TP
Vite griffa



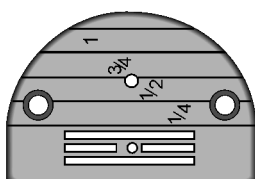
B1109-012-A00
Placca ago standard
(DDL-555; DDL-5550)

SS-2110920-TP
SS-2110915-SP
Viti placca



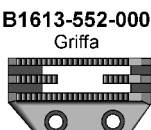
B1613-012-A00
Griffa

SS-4080620-TP
Vite griffa



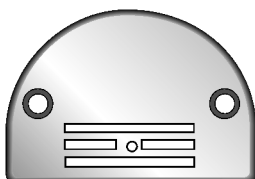
B1109-552-000
Placca ago
(vers. JA)

SS-2110920-TP
SS-2110915-SP
Viti placca



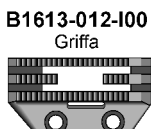
B1613-552-000
Griffa

SS-4080620-TP
Vite griffa



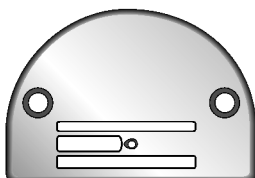
B1109-012-100
Placca ago materiali
leggeri

SS-2110920-TP
SS-2110915-SP
Viti placca



B1613-012-100
Griffa

SS-4080620-TP
Vite griffa



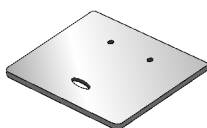
B1109-555-H0B
Placca ago materiali
pesanti

SS-2110920-TP
SS-2110915-SP
Viti placca

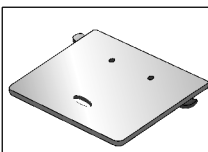


B1613-555-H00
Griffa

SS-4080620-TP
Vite griffa



B1110-012-000
Placca scorrevole



110-01658
Placca scorrevole
completa



110-18504
Guidafilo A
110-01500
Vite



110-01609
Molla
SS-6060210-SP
Vite



B1114-012-000
Perno



110-18603
Guidafilo B
SS-6110610-TP
Vite



TA-1250705-R0
Tappo in gomma

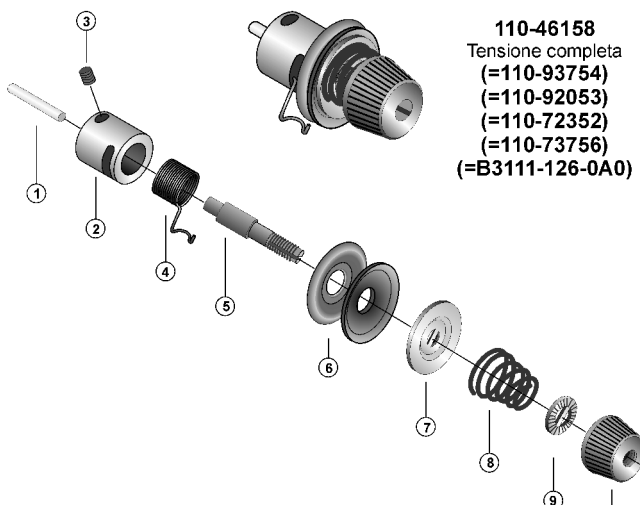


TA-1250406-R0
Tappo in gomma



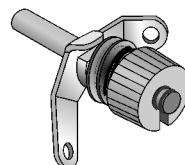
TA-2101002-R0
Tappo in gomma

Serie: DDL-555; DDL-5550; DDL-5550N; ecc.

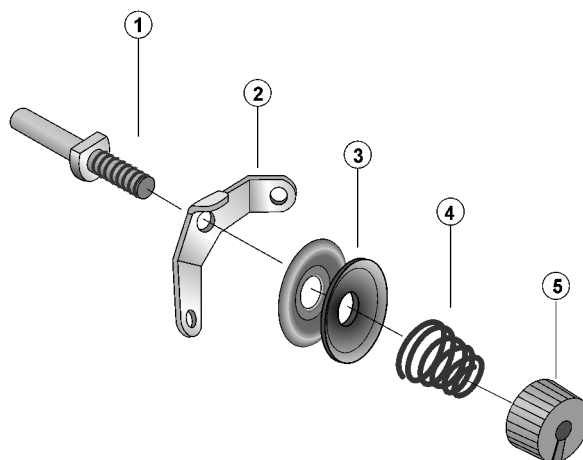


110-46158
Tensione completa
(=110-93754)
(=110-92053)
(=110-72352)
(=110-73756)
(=B3111-126-0A0)

- | | | |
|------|----------------------------|----------------------|
| 1 - | B3118-552-E00 | Spillo apri tensione |
| 2 - | B3111-126-000 | Bloccetto tensione |
| 3 - | SS-8090670-SP | Vite bloccetto |
| 4 - | B3128-012-000 | Molla tendifilo |
| | (=D3128-555-D00)..... | Molla tendifilo |
| 5 - | B3115-552-000 | Perno |
| 6 - | B3126-012-000 | Disco |
| 7 - | B3132-552-000 | Piattello |
| 8 - | B3129-012-A00 | Molla |
| | (=B3114-232-000)..... | Molla |
| | (=D3129-555-D00)..... | Molla |
| 9 - | B3120-125-000 | Disco bloccaggio |
| 10 - | 110-18900 | Bottoni |
| | (=110-72204)..... | Bottoni |
| | (=B3116-125-000)..... | Bottoni |



110-45051
Tensione piccola cpl.
(= 110-72451)
(= 113-12055)
(= 110-93655)
(= 110-73954)



- | | | |
|-----|----------------------------|----------------|
| 1 - | 110-45002 | Perno |
| 2 - | 110-45200 | Guidafilo |
| 3 - | B3214-047-000 | Disco tensione |
| 4 - | 110-45101 | Molla |
| | (=110-93606)..... | Molla |
| 5 - | 110-45309 | Bottoni |
| | (=110-72402)..... | Bottoni |