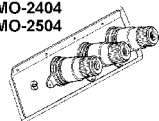


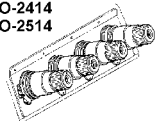
Serie : MO-2400 ; MO-2500

COMPONENTI TENSIONI

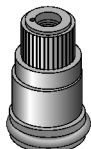
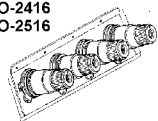
MO-2404
MO-2504



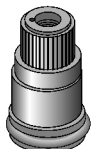
MO-2414
MO-2514



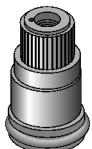
MO-2416
MO-2516



B3102-704-0B0
Tensione completa
(gialla)



B3101-704-0B0
Tensione completa
(rossa)



B3103-704-0B0
Tensione completa
(blu)



B3106-704-00C
Bottone
(giallo)



B3106-704-00A
Bottone
(rosso)



B3106-704-00B
Bottone
(blu)



B3112-704-000
Bussola



B3112-704-000
Bussola



B3112-704-000
Bussola



B3102-804-000
Molla



B3101-804-000
Molla



B3103-804-000
Molla



B3107-704-000
Scodellino



B3107-704-000
Scodellino



B3107-704-000
Scodellino



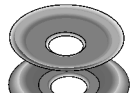
B3120-704-000
Feltro



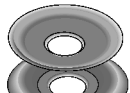
B3120-704-000
Feltro



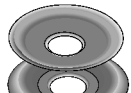
B3120-704-000
Feltro



B3126-012-000
Disco tensione



B3126-012-000
Disco tensione



B3126-012-000
Disco tensione



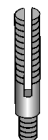
B3120-352-000
Feltro



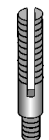
B3120-352-000
Feltro



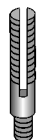
B3120-352-000
Feltro



B3105-804-000
Perno tensione



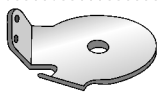
B3105-804-000
Perno tensione



B3105-804-000
Perno tensione



B3109-704-000
Guida filo
(MO-2504; 2514; 2516)



115-51009
Guida filo
(MO-2514)



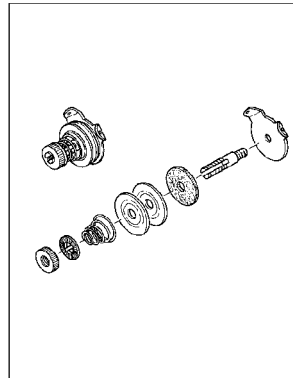
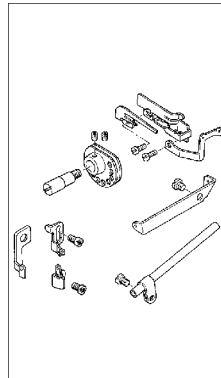
115-50308
Guida filo
(MO-2516)

B3108-704-000
Guida filo
(MO-2404; 2414; 2416)

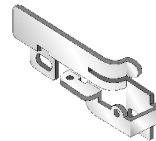
118-36301
Guida filo
(MO-2414; MO-2416)

Per : MO-2416 ; MO-2516

COMPONENTI PER TENSIONE AUSILIARIA



B2204-816-000
Gancio



118-29504
Guida filo



118-29603
Guida filo



118-17202
Passa filo
(vecchio tipo)



118-17210
Passa filo
(nuovo tipo)



118-16709
Passa filo

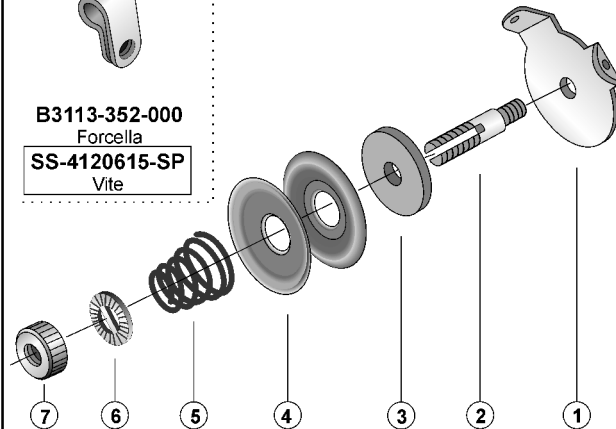
SS-4110715-SP
Vite

SS-4110715-SP
Vite

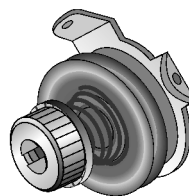
SS-4110715-SP
Vite



B3113-352-000
Forcella
SS-4120615-SP
Vite



- 1 - 115-50308 Guida filo
- 2 - 115-50803 Perno tensione
- 3 - B3120-352-000 Feltro
- 4 - B3126-012-000 Disco tensione
- 5 - B2017-372-000 Molla
- 6 - B3120-125-000 Disco barrato
- 7 - B2314-019-000 Dado tensione



115-50852
Tensione supplementare
completa
(MO-2416; MO-2516)