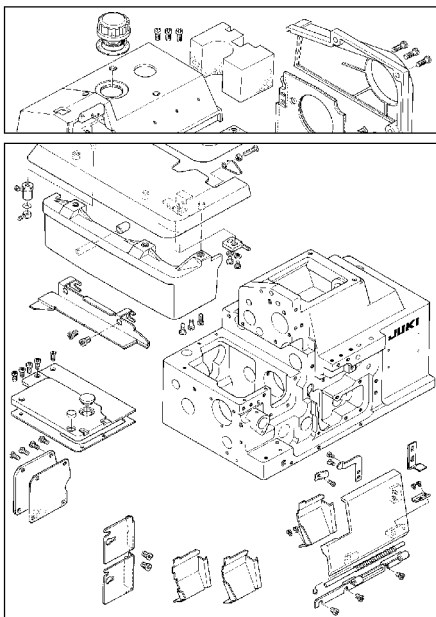


Serie : MO-2400 ; MO-2500

COMPONENTI SUPPORTO



115-01301
Bussola eccentrica
SS-8110422-TP
Vite



118-02303
Fermo
SS-4110715-SP
Vite
WP-0450000-SD
Rondella



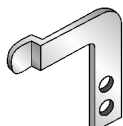
118-02402
Molla
SS-6111740-SP
Vite
NS-6110420-SP
Dado



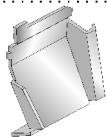
TA-1250406-RO
Tappo



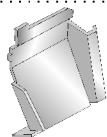
118-03400
Molla del copri crochet
SS-7110720-SP
Vite



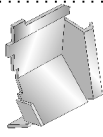
118-03301
Lamella del copri crochet
SS-7090530-SP
Vite



118-67108
Carter di protezione
(MO-2404; MO-2504)

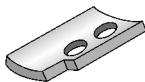


118-67207
Carter di protezione
(MO-2414; MO-2514)

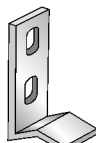


118-67306
Carter di protezione
(MO-2416; MO-2516)

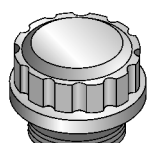
SS-3090610-SP Vite carter di protezione



118-03103
Piastrina
SS-7090530-SP
Vite



118-03202
Molla



118-00604
Tappo olio



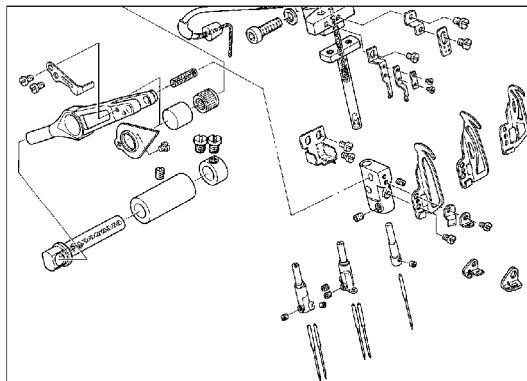
B1140-716-000
Molla



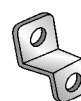
115-00808
Guarnizione tappo

Serie : MO-2400 ; MO-2500

COMPONENTI MOVIMENTO AGO



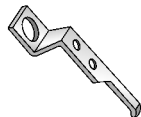
118-16105
Tendifilo
SS-6080410-SP
Vite



118-16501
Squadretta per guidafile
SS-7090540-TP
Vite



118-16600
Guidafile
SS-7090530-SP
Vite



118-16857
Base per morsetto
(MO-2416; MO-2516)
SS-6080410-SP
Vite

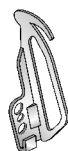


118-16907
Linguetta passafilo
(MO-2416; MO-2516)



118-17103
Rosetta di bloccaggio
(MO-2416; MO-2516)

SS-5060310-SP Vite



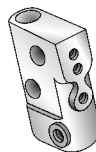
118-16006
Leva prendifilo
vecchio tipo
(MO-2404; MO-2416; MO-2504; MO-2516)



118-16014
Leva prendifilo
nuovo tipo
(MO-2416; MO-2516)



118-17301
Leva prendifilo
(MO-2414; MO-2514)



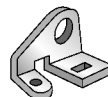
118-15503
Supporto morsetto



118-16204
Molla



118-16303
Guida passafilo



118-16402
Guida passafilo
vecchio tipo



118-16410
Guida passafilo
nuovo tipo