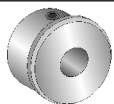
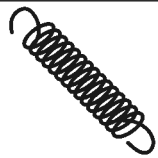


Parti per..... MB-372; MB-373 **JUKI**

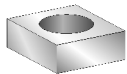
Serie: MB-372; MB-373



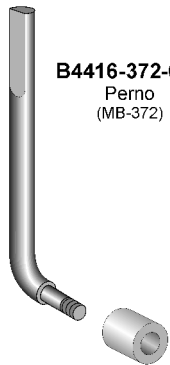
B2530-372-0A0
Boccola
SS-8680810-TP
Vite



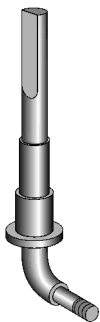
B4419-372-000
Molla



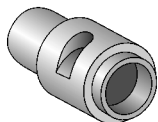
B2524-372-000
Spessore



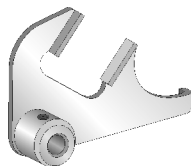
B4416-372-000
Perno
(MB-372)



B4416-373-AA0
Perno
(MB-373)

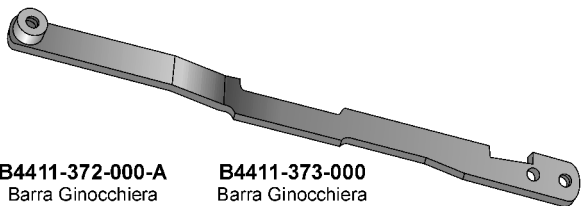


B1407-372-000
Bussola



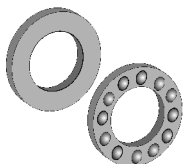
B4401-372-0A0
Porta eccentrico

B4417-372-000
Boccola
(MB-372)

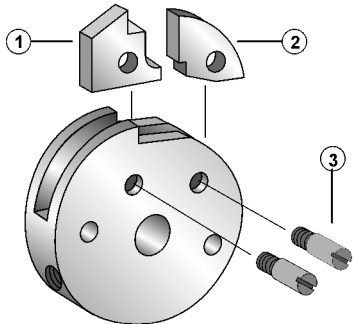


B4411-372-000-A
Barra Ginocchiera
(MB-372)

B4411-373-000
Barra Ginocchiera
(MB-373)

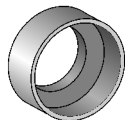


B1215-372-B00
Cuscinetto a sfere

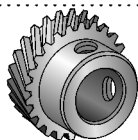


B1210-372-0A0
Camma ferma movimento completa

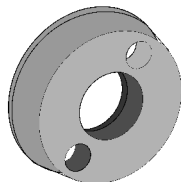
- 1 - B1211-372-000 Dente ferma disco
- 2 - B1212-372-000 Scatto ferma disco
- 3 - B1213-372-000 Vite



B1207-372-000
Anello di tenuta

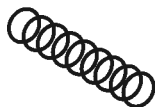


B1217-372-0A0
Ingranaggio
SS-8660612-TP
Vite



B1208-372-000
Disco frizione

SS-6152440-SP
Vite
WP-0621026-SP
Rondella



B1205-372-000
Molla

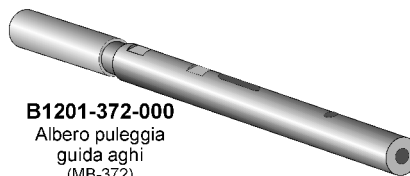


B1246-372-000
Sfera piccola



B1203-372-000
Sfera grande

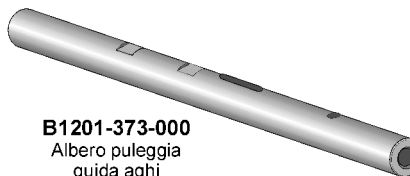
Serie: MB-372; MB-373



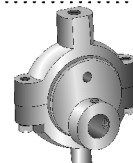
B1201-372-000
Albero puleggia
guida aghi
(MB-372)



B1414-372-0A0
Asta di congiunzione

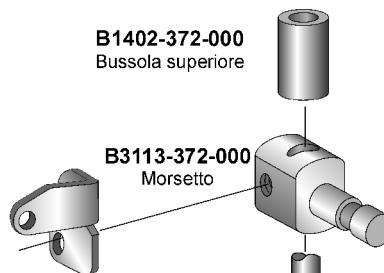


B1201-373-000
Albero puleggia
guida aghi
(MB-373)



B1416-372-0A0
Congiunzione eccentrica
completa

B1402-372-000
Bussola superiore



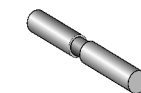
B3113-372-000
Morsetto



B2609-372-000
Molla

B3112-372-000
Bilancere barra ago
SS-6091210-TP
Vite

B1401-372-000-A
Barra ago
SS-7080510-TP
Vite ago



B2608-372-000
Spina per molla

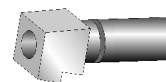
B1403-372-000-A
Bussola inferiore



B2616-372-000
Molla



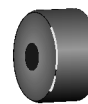
B2605-372-000
Perno



B2604-372-000
Pistone



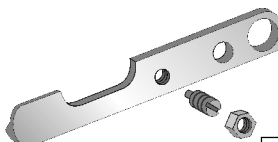
B2606-372-000
Molla a disco



B2608-372-000
Ammortizzatore



B8220-804-000
Anello



B2611-372-000
Leva

SS-8151570-SP
Vite
NS-6150310-SP
Dado



B2618-372-0A0
Leva