

# MACCHINE PER CUCIRE INDUSTRIALI



mod. TJ20U53

cod. **220** (Testa zig zag)

1	2500	0-5	10	6	134	56x25x36	25/21	



mod. TJ20U43-2

cod. **230** (Testa zig zag elettronica)

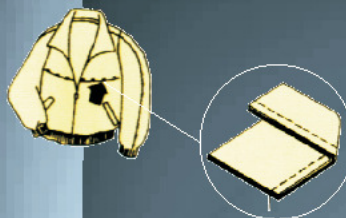
1	2000	0-5	12	6	134	56x25x36	25/21	



mod. TJ8700

cod. **520** (Testa lineare)

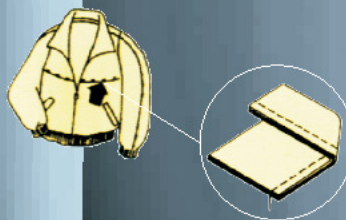
1	5500	0-5	mat. medi	5,5-13	1738	59x23x56	24,5/35	



mod. TJ8700D

cod. **530** (Testa lineare - rasafilo)

1	5500	0-5	SI	5,5-13	1738	59x23x56	24,5/35	



mod. TJ9800D-7

cod. **560** (Testa lineare - rasafilo con motore incorporato)

1	5500	0-5	SI	5,5-13	1738	59x23x56	24,5/35	

