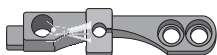


KL. 145, 245, 545, 1245



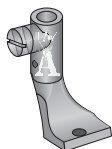
91-045592-04



91-045591-04



91-044227-04



91-042819-93/57 - 5,0 mm
91-042819-93/58 - 6,0 mm
91-042819-93/60 - 8,0 mm

91-044251-21
Passanastro
Tape rack tension



91-045607-90/01
Piastra vibrante - Binder set plate



91-000824-25
Vite - Screw

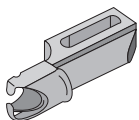


91-040624-25
Molla - Spring

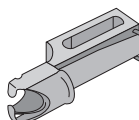


91-028036-25
Rondella - Washer

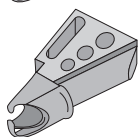
Bordatori fresati per macchine piane
Binders for flat bed machines



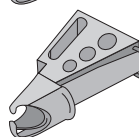
Normali
Standard



Con guida
With guide



Inclinati
Slanted



Inclinati, con guida
Slanted, with guide

Fornibili in tutte le misure - Available in all sizes



Bordatore semplice
Single binder



Bordatore semplice sfalsato
Single stagger binder



Bordatore tre risvolti
Semi-fold binder



Bordatore tre risvolti sfalsato
Semi-fold stagger binder



Bordatore doppio
Double binder

IN FASE DI ORDINE SPECIFICARE:

- La larghezza del nastro utilizzato;
- Lo spessore del materiale che si deve utilizzare;
- La classe esatta della macchina sulla quale deve essere applicato il bordatore richiesto;

ESEMPIO

Un bordatore mm 20 x 4 x 1,5 sarà utilizzabile con un nastro da 20 mm di larghezza e fino a 1,5 mm di spessore, per bordare un materiale di spessore fino a 4 mm.

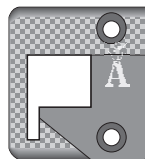
WITH ORDER SPECIFY

- Width of tape to be used
- Thickness of material to be binded
- Correct class of machine where binder required must be applied.

EXAMPLE

A binder 20x4x1,5 mm will be used with a 20 mm width tape and up to 1,5 mm thickness, for binding up to 4 mm thickness material.

KL. 335



91-046498-04 (AB)



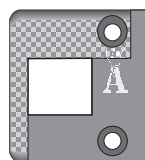
91-046497-04



91-040432-04/52 - 4,0 mm
91-040432-04/53 - 5,0 mm
91-040432-04/54 - 6,0 mm
91-040432-04/55 - 8,0 mm



91-040629-93/55 - 4,0 mm
91-040629-93/56 - 5,0 mm
91-040629-93/57 - 6,0 mm
91-040629-93/58 - 8,0 mm



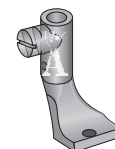
91-046052-05 (AB)



91-046051-04 (B 1,8)

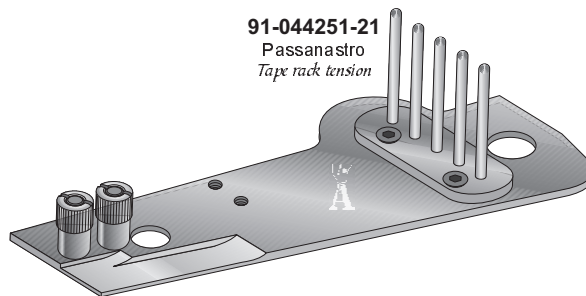


91-044227-04



91-042819-93/57 - 5,0 mm
91-042819-93/58 - 6,0 mm
91-042819-93/60 - 8,0 mm

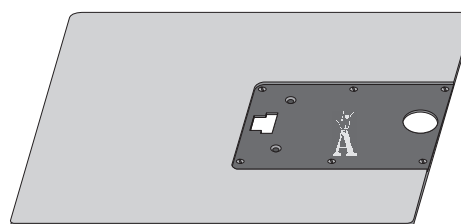
91-044251-21
Passanastro
Tape rack tension



91-040894-21/01 Piastra vibrante (senza passanastro)
Binder set plate (without tape rack tension)

91-040895-91/01 Piastra vibrante completa
Binder set plate asm.

Tavoletta supplementare - Flat bed table



3161