

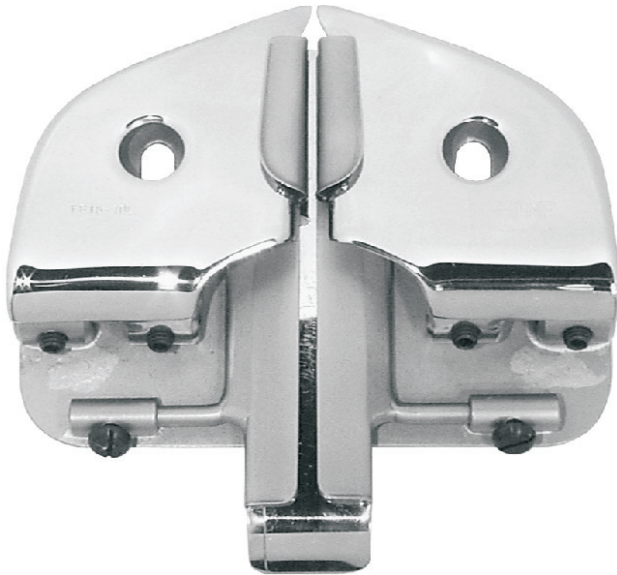
# Guide lampo

(Zipper guides)

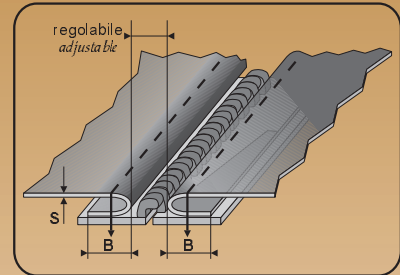
## F815

ORLATORE DOPPIO REGOLABILE, PIEGA INFERIORE CON INSERIMENTO CERNIERA

Per macchine piane 2 aghi  
For 2 needle flat bed machines

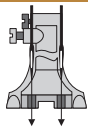


DOUBLE ADJUSTABLE HEMMER,  
WITH ZIP INSERTION



Codice	Lav. finito (B) (finished size) (mm)	Spessore (S) (thickness)	Cerniera (zip) (mm)
F815	10	M	regolabile

PIEDINI CONSIGLIATI - SUGGESTED FEET

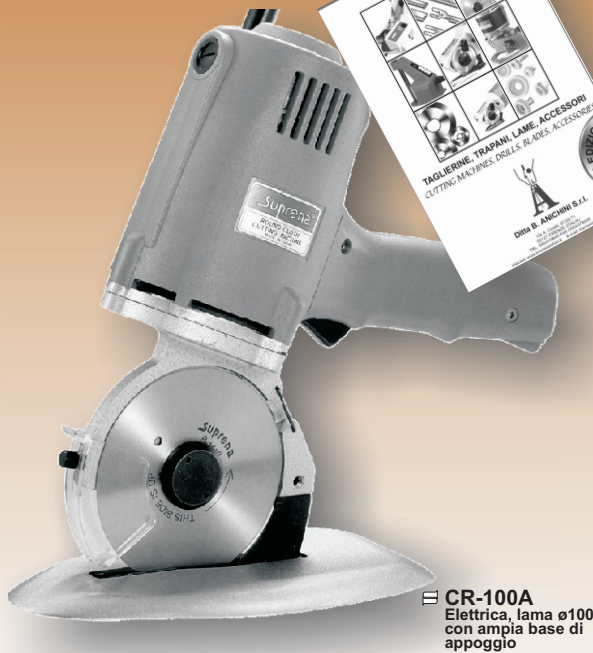


visto da sotto  
under view

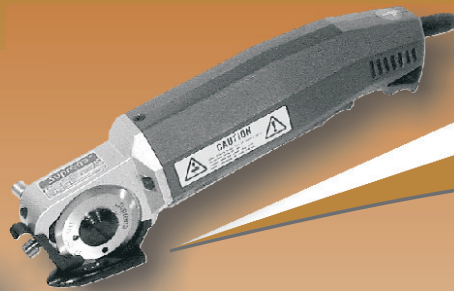
FORNIBILI A  
RICHIESTA  
MANUFACTURED  
ON REQUEST

TAGLIERINE ROTATIVE [www.brunoanichini.it](http://www.brunoanichini.it)

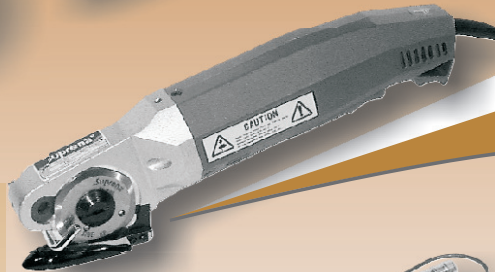
**Suprena**  
CUTTING MACHINES



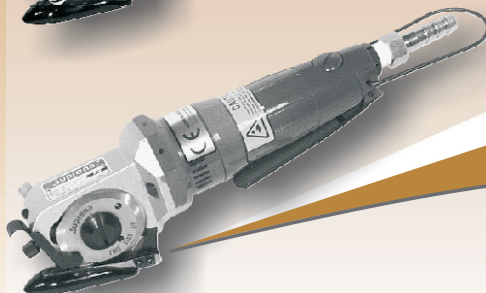
CR-100A  
Elettrica, lama ø100  
con ampia base di  
appoggio



HC-1007A-C  
Mini elettrica



HC-1015A-C  
Mini elettrica  
potenziata



PC-1062-C  
Pneumatica

TAGLIERINE ROTATIVE per il taglio di pelle,  
finta pelle, materiali sintetici, stoffa, etc.  
ROUND CUTTING MACHINES for cut leather, syntetic materials, cloth, etc.