

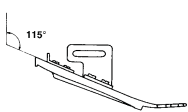


# Bordatori

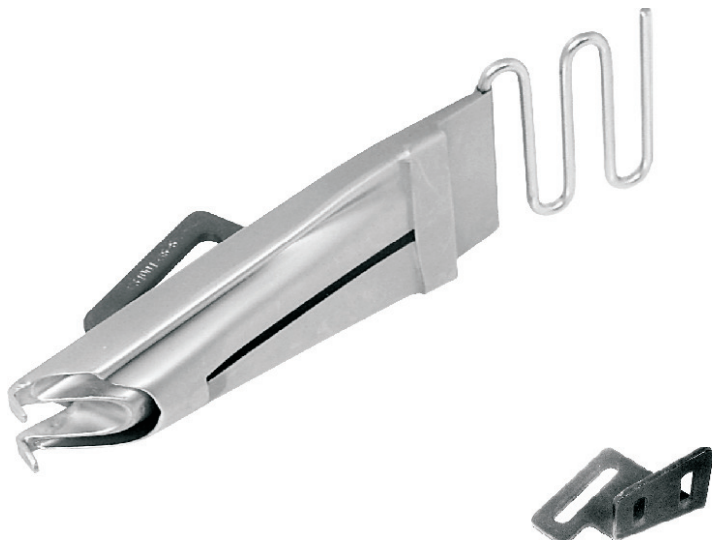
(Binders)

## F34001

BORDATORE AD ANGOLO  
A 3 RISVOLTI (115°)

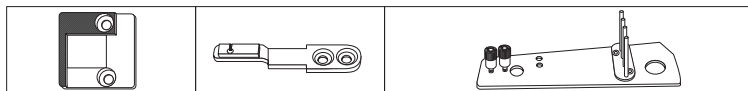


*Per macchine triplice trasporto*  
*For walking foot machines*

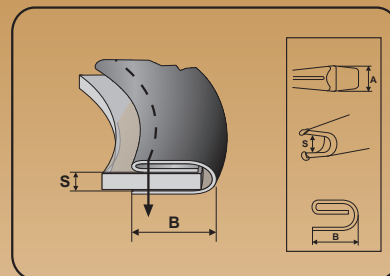


Da utilizzare con trasformazioni per bordare. Vedi pag. 49-51  
*Utilize with binding sets. See on pages 49-51*

F34000A - staffa  
- bracket



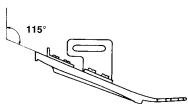
RIGHT ANGLE SEMI-FOLD BINDER (115°)



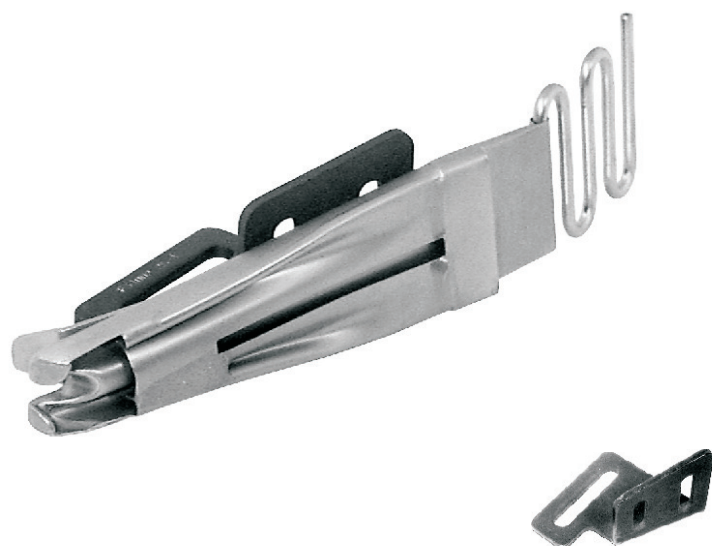
Codice	(A)	(S)	(B)	Codice	(A)	(S)	(B)
F34001/14x4	14	4	3	F34001/28x5	28	5	10
F34001/16x4	16	4	4	F34001/28x6	28	6	10
F34001/19x5	19	5	4,5	F34001/28x7	28	7	10
F34001/20x4	20	4	7	F34001/30x4	30	4	11
F34001/20x5	20	5	7	F34001/30x5	30	5	11
F34001/20x6	20	6	7	F34001/30x6	30	6	11
F34001/22x4	22	4	8	F34001/30x8	30	8	11
F34001/22x5	22	5	8	F34001/35x5	35	5	13
F34001/22x6	22	6	8	F34001/35x6	35	6	13
F34001/24x6	24	6	8	F34001/35x8	35	8	16
F34001/25x4	25	4	9				
F34001/25x5	25	5	9				
F34001/25x6	25	6	9				
F34001/27x5	27	5	9,5				
F34001/28x4	28	4	10				

## F34002

BORDATORE AD ANGOLO  
DOPPIA PIEGA (115°)

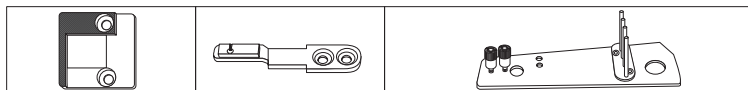


*Per macchine triplice trasporto*  
*For walking foot machines*

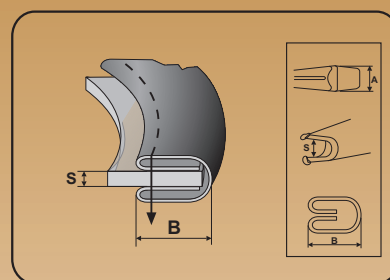


Da utilizzare con trasformazioni per bordare. Vedi pag. 49-51  
*Utilize with binding sets. See on pages 49-51*

F34000A - staffa  
- bracket



RIGHT ANGLE DOUBLE BINDER (115°)



Codice	(A)	(S)	(B)	Codice	(A)	(S)	(B)
F34002/20x4	20	4	5	F34002/30x7	30	7	8
F34002/20x5	20	5	4	F34002/32x6	32	6	10
F34002/22x4	22	4	6	F34002/35x5	35	5	11
F34002/22x5	22	5	5,5	F34002/35x6	35	6	10,5
F34002/22x6	22	6	5,5	F34002/35x7	35	7	10,5
F34002/25x4	25	4	7	F34002/40x5	40	5	12
F34002/25x5	25	5	6,5	F34002/40x7	40	7	11,5
F34002/25x6	25	6	6,5	F34002/40x8	40	8	11,5
F34002/27x6	27	6	7				
F34002/28x4	28	4	8				
F34002/28x5	28	5	7,5				
F34002/28x6	28	6	7,5				
F34002/30x4	30	4	9				
F34002/30x5	30	5	8,5				
F34002/30x6	30	6	8,5				