

KI. DVK 1702, 1703, DWK 1802, 1803, 1804 V 7002-3, V 7102-3, W 8002-3, W 8102-3

Placche e griffe per cuciture normali (D) (DE) Needle plates and feed dogs for plain seaming operations (D) (DE)

NORMALE (D) STANDARD (D)



Vite placca
Needle plate screw
cod. 84-4640-0

Placca 2 aghi
Needle plate (2 needles)
cod. **14-7240-0** (1/8")
cod. **14-7340-0** (5/32")
cod. **14-7440-0** (3/16")
cod. **14-7540-0** (7/32")
cod. **14-7640-0** (1/4")



Vite placca
Needle plate screw
cod. 84-4640-0

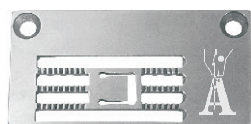
Placca 3 aghi
Needle plate (3 needles)
cod. **14-8540-0** (7/32")
cod. **14-8640-0** (1/4")



Vite placca
Needle plate screw
cod. 84-4640-0

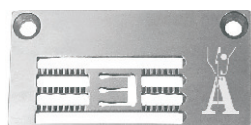
Placca 4 aghi
Needle plate (4 needles)
cod. **14-8930-0** (15/64")

per ELASTICO (DE) for ELASTIC (DE)



Vite placca
Needle plate screw
cod. 84-4640-0

Placca 2 aghi - ranghi dentati
Needle plate (2 needles) - toothed
cod. **14-7250-0** (1/8")
cod. **14-7350-0** (5/32")
cod. **14-7450-0** (3/16")
cod. **14-7550-0** (7/32")
cod. **14-7650-0** (1/4")



Vite placca
Needle plate screw
cod. 84-4640-0

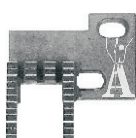
Placca 3 aghi - ranghi dentati
Needle plate (3 needles) - toothed
cod. **14-8550-0** (7/32")
cod. **14-8650-0** (1/4")

NORMALE (D) e per ELASTICO (DE) STANDARD (D) and for ELASTIC (DE)

Vite griffa
Feed dog screw
cod. 84-3630-0



Griffa anteriore
Front feed dog
cod. **15-7240-0** (1/8")(5/32")
cod. **15-7230-0** (3/16")(7/32")
(15/64")(1/4")



Vite griffa
Feed dog screw
cod. 84-1620-0

Griffa posteriore
Rear feed dog
cod. **15-7550-0** (1/8")(5/32")
cod. **15-7530-0** (3/16")(7/32")
(15/64")(1/4")

NORMALE (D) e per ELASTICO (DE) STANDARD (D) and for ELASTIC (DE)

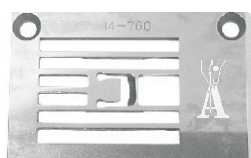
KI. DVK1702E, DVK1702P, DVK1703E, DVK1702B, B2000



Griffa
Feed dog
cod. **15-7040-0** (3/16")
(7/32")
(1/4")

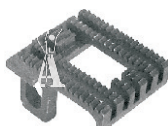
NORMALE (D) STANDARD (D)

KI. DVK1702BK, B2000C



Vite placca
Needle plate screw
cod. 84-4640-0

Placca 2 aghi
Needle plate (2 needles)
cod. **14-7600-0** (1/4")



Griffa
Feed dog
cod. **15-7600-0** (1/4")

KL. WX 8702, 8703, 8802, 8803, RX 9702, 9703, 9802, 9803

Placche e griffe per cuciture normali (D) (DE) (A) Needle plates and feed dogs for plain seaming operations (D) (DE) (A)

NORMALE (D) STANDARD (D)



Vite placca
Needle plate screw
cod. 84-4640-0

Placca 2 aghi ranghi lunghi
Needle plate (2 needles) long ranks
cod. **14-8840-0** (3/16")
cod. **14-8850-0** (5/32")
cod. **14-8860-0** (3/16")
cod. **14-8870-0** (7/32")
cod. **14-8880-0** (1/4")



Vite placca
Needle plate screw
cod. 84-4640-0

Placca 3 aghi ranghi corti
Needle plate (3 needles) short ranks
cod. **14-8170-0** (3/16")
cod. **14-8200-0** (7/32")
cod. **14-8190-0** (1/4")



Vite placca
Needle plate screw
cod. 84-4640-0

Placca 3 aghi ranghi lunghi
Needle plate (3 needles) long ranks
cod. **14-8890-0** (3/16")
cod. **14-8900-0** (7/32")
cod. **14-8910-0** (1/4")

NORMALE (D) e per ELASTICO (DE) STANDARD (D) and for ELASTIC (DE)

KI. WX8702D, WX8802D, WX8703D, WX8803D, WX8703DE, WX8803DE



Vite griffa
Feed dog screw
cod. 84-3590-0

Griffa anteriore
Front feed dog
cod. **15-8050-0**
(1/8")(5/32")(3/16")(7/32")
cod. **15-8070-0** (1/4")



Vite griffa
Feed dog screw
cod. 84-3590-0

Griffa posteriore
ranghi corti
Rear feed dog short ranks
cod. **15-8060-0**
(1/8")(5/32")(3/16")(7/32")
cod. **15-8080-0** (1/4")



Vite griffa
Feed dog screw
cod. 84-3590-0

Griffa posteriore
ranghi lunghi
Rear feed dog long ranks
cod. **15-8430-0**
(1/8")(5/32")(3/16")(7/32")
cod. **15-8440-0** (1/4")

KI. RX9702A, RX9802A, RX9703A, RX9803A,
RX9702D, RX9802D, RX9703D, RX9803D



Vite griffa
Feed dog screw
cod. 84-3740-0

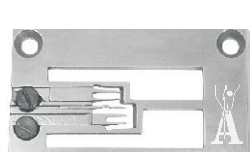
Griffa anteriore
Front feed dog
cod. **15-8010-0** (1/8")(5/32")(3/16")
cod. **15-8030-0** (7/32")(1/4")



Vite griffa
Feed dog screw
cod. 84-3600-0

Griffa posteriore
Rear feed dog
cod. **15-8020-0** (1/8")(5/32")(3/16")
cod. **15-8040-0** (7/32")(1/4")

KL. PX 301, 302, DPW 1301, 1302



Vite placca
Needle plate screw
cod. 84-4640-0

Placca Needle plate
cod. **14-3010-0**



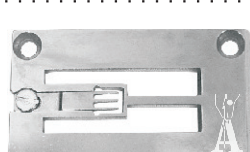
Vite griffa
Feed dog screw
cod. 84-3630-0

Griffa anteriore
Front feed dog
cod. **15-3010-0**



Vite griffa
Feed dog screw
cod. 84-1620-0

Griffa posteriore
Rear feed dog
cod. **15-3610-0**



Vite placca
Needle plate screw
cod. 84-4640-0

Placca Needle plate
cod. **14-3020-0**



Vite griffa
Feed dog screw
cod. 84-3630-0

Griffa anteriore
Front feed dog
cod. **15-3020-0**



Vite griffa
Feed dog screw
cod. 84-1620-0

Griffa posteriore
Rear feed dog
cod. **15-3620-0**