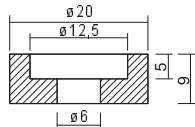




Mole per taglierine verticali - *Grinding wheel for vertical cutters*

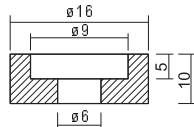
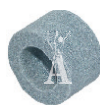
KURIS

KV1100, 1350, 1600, 2000



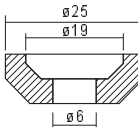
cod. **11462** (24190)
- mola
- grinding wheel

KVS700

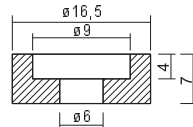


cod. **11466** (24200)
- mola
- grinding wheel

KVS900

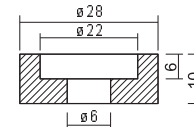


cod. **24716** (24716)(24249)
- mola
- grinding wheel



cod. **24248** (24248)
- mola
- grinding wheel

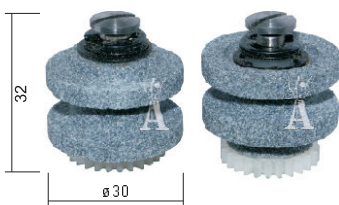
KVS1100, 1350, 1600, 2000



cod. **11460** (24180)
- mola
- grinding wheel

MAIMIN

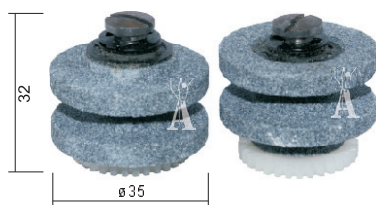
serie B, C, D



- coppia mole
- grinding wheel couple

cod. **11615** (821C) - grana media *medium grit*
cod. **11616** (821D) - grana fine *fine grit*

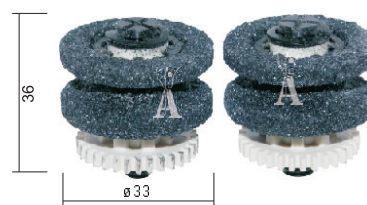
serie H



- coppia mole
- grinding wheel couple

cod. **11630** (891B) - grana media *medium grit*
cod. **11631** (891C) - grana fine *fine grit*

serie K

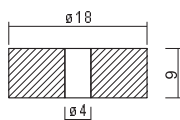


- coppia mole
- grinding wheel couple

cod. **11645** (1300) - grana media *medium grit*
cod. **11646** (1301) - grana fine *fine grit*

SECAT

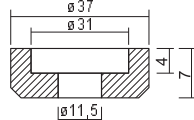
SA10, SA12, SA15, SA20



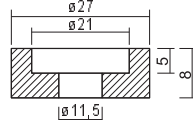
cod. **SA001** (A06)
- mola
- grinding wheel

WOLF

75, PACER serie X

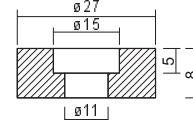


- mola
- grinding wheel
cod. **12220** - grana media *medium grit* (7658P) (7685300)
cod. **12221** - grana grossa *coarse grit* (7685200)



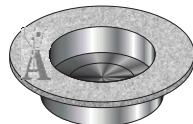
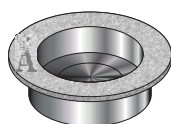
- mola
- grinding wheel
cod. **12224** - grana media *medium grit* (7663) (1270100)
cod. **12225** - grana grossa *coarse grit* (7663P) (1270200)

SUPER PACER serie VI, VII
NEW PACER 100 serie VI



- mola
- grinding wheel
cod. **1280100** - grana media *medium grit* (1280100)
cod. **1280000** - grana grossa *coarse grit* (1280000)

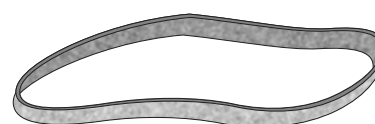
Mole per taglio computerizzato *Grinding wheel for automatic cutters*



- mole
- grinding wheels

cod. CNC/1100 (—) Ø25	GERBER G98
cod. CNC/1110 (—) Ø35	GERBER G91
cod. CNC/1200 (—) Ø45	INVESTRONICA
cod. CNC/1300 (24420) 23/15,5 x 7,5	KURIS ZAT III
cod. CNC/1310 (24422) 33/28,5 x 8	KURIS ZAT III
cod. CNC/1400 (—) Ø35	LECTRA 95/96

Affilatori a nastro per taglio computerizzato *Abrasive bands for for automatic cutters*



LECTRA

- nastro affilatore
- abrasive band

cod. 12381/F	6 x 220	grana fine (120)	<i>fine grit (120)</i>	95/96
cod. 12381/M	6 x 220	grana media (100)	<i>medium grit (100)</i>	95/96
cod. 12381/G	6 x 220	grana grossa (80)	<i>coarse grit (80)</i>	95/96
cod. CNC/1500	12 x 226	grana Xfine (150)	<i>Xfine grit (150)</i>	VECTOR 2500
cod. CNC/1505	12 x 226	grana fine (120)	<i>fine grit (120)</i>	VECTOR 2500
cod. CNC/1510	12 x 226	grana media (100)	<i>medium grit (100)</i>	VECTOR 2500