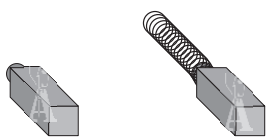




Carboncini per motori domestici - Domestic motors carbon brushes

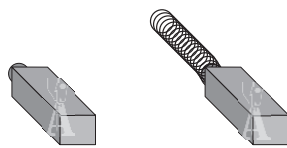
OCEL, GUTRIS, DOMUS, ecc.



cod. **4502**
(4,90x4,90x12,0)

cod. **4502M**
(4,90x4,90x12,0)

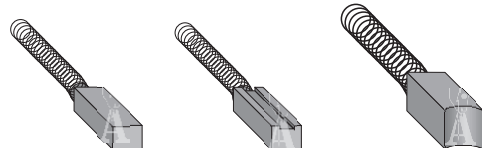
FIMEM, GUTRIS M/35, ecc.



cod. **4504**
(5,90x4,90x15,0)

cod. **4506**
(5,90x4,90x14,0)

NECCHI, SUPERNOVA

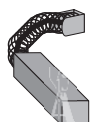


cod. **4508**
(4,90x3,95x12,0)

cod. **4510**
(4,90x3,90x12,0)

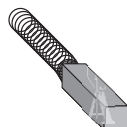
cod. **4512**
(6,30x6,30x12,0)

PFUFF (interni)



cod. **4514**
(4,85x3,90x15,0)

SINGER (BZK)



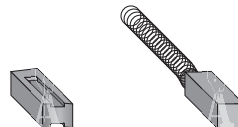
cod. **4516**
(3,85x3,85x13,0)

SINGER (PAB interni)



cod. **4518**
(5,3x5,3x13,0)

SINGER, MERRIT

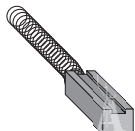


cod. **4520**
(4,90x3,90x10,0)
(= 619435)

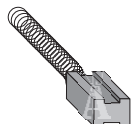
cod. **4523**
(4,45x3,90x10,0)

cod. **4550**
- molla per carboncini
- carbon brushes spring

NECCHI



cod. **50145-4-00**
(4,90x3,90x12,0)



cod. **323955-0-00**
(6,00x5,00x10,0)

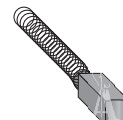


cod. **530520-0-00**
(ø8,50x11,0)



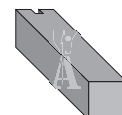
cod. **530658-0-00**
(4,70x3,90x12,0)

PFUFF KL 1010, 1037, 1047, 1069



cod. **93-050431-05**
(= 92-326369-05)
(3,90x3,90x8,5)

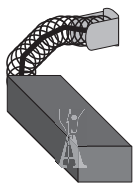
PFUFF KL 1472, 1475



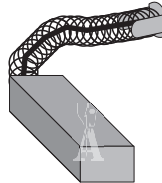
cod. **92-328516-05**
(5,00x5,00x19,0)

Carboni per motori artigianali e industriali - Industrial and semi-industrial motors carbon brushes

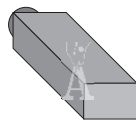
OCEL, MORETTI, FIMEM, ecc."



carboncino morbido
cod. **4524**
(8,90x5,90x22,0)

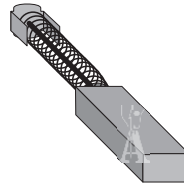


carboncino duro
cod. **4525**
(8,90x5,90x22,0)



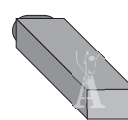
cod. **4526**
(8,60x5,65x22,0)

MASTER

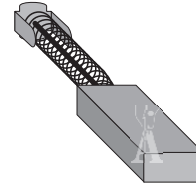


cod. **4528**
(7,75x4,75x21,0)

SINGER

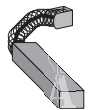


cod. **4530**
(7,90x4,90x22,0)

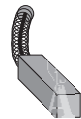


cod. **4532**
(9,90x4,90x22,0)

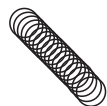
QUIK-STOP



cod. **5760**
(3,90x2,90x15,0)



cod. **5770**
(3,90x3,90x12,0)



cod. **4551**
- molla per carboni
- carbon brushes spring

Tappini per carboni - Carbon brushes caps

OCEL-MORETTI



cod. **4920**
capp. V.T.



cod. **4920**
capp. N.T.



cod. **5132**

FIMEM



cod. **4950**

QUIK-STOP



cod. **5752**

NECCHI



cod. **50143-0-02**

PFUFF



cod. **92-203047-05**
(= 92-322540-05)