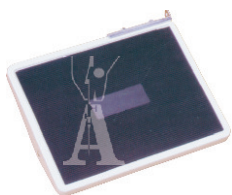




Accessori per sostegni - *Accessories for stands*



cod. **3352** (28x22 cm)
- pedana con gomma
- *footboard with rubber mat*



cod. **3356** (11x22 cm)
- pedana con gomma
- *footboard with rubber mat*



cod. **3357** (58x22 cm)
- gruppo pedane per retromarcia
- *reverse motion unit*



cod. **3374**
- staffa corta per pedane
- *short footboard bracket*



cod. **3375**
- staffa lunga per pedane
- *long footboard bracket*



cod. **3525** (28x22 cm)
- tappeto in gomma
- *rubber mat*

cod. **3525/A** (28x22 cm)
- tappeto in gomma adesivo
- *adhesive rubber mat*

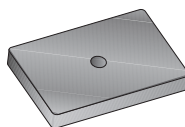


cod. **3526** (11x22 cm)
- tappeto in gomma
- *rubber mat*

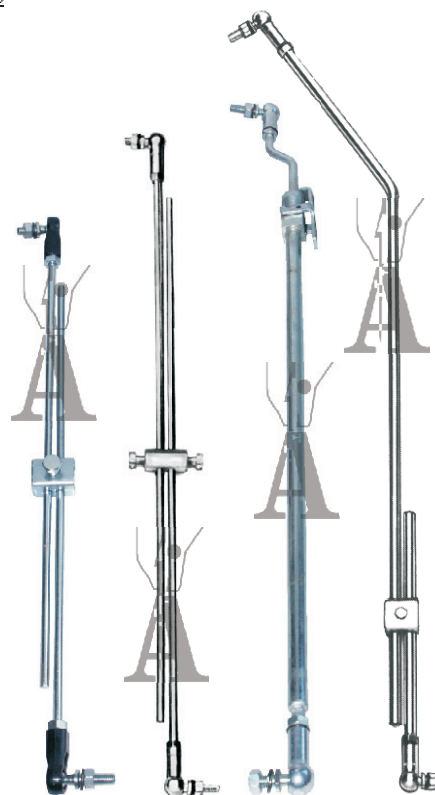
cod. **3526/A** (11x22 cm)
- tappeto in gomma adesivo
- *adhesive rubber mat*



cod. **3368**
- piedino regolabile
- *adjustable foot*



cod. **3378**
- ammortizzatore per tavolo
- *shock absorber*



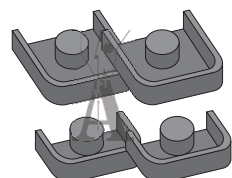
cod. **3358**
- tirante motore
- *motor control rods*

- tranti retromarcia
- *reverse motion control rods*

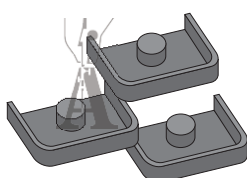
cod. **3359** - standard

cod. **3359/A** - con sgancio,
- *with unlocking hook*

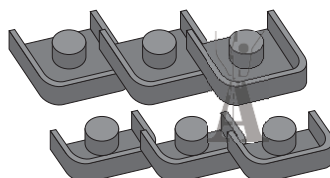
cod. **3359/B** - piegato, *slanted*



cod. **3362**
- gruppo piedini per sostegno
3010
- *feet group for stand*
3010



cod. **3364**
- gruppo piedini per sostegni
3021, 3022, 3035, 3060, 3090
- *feet group for stands*
3021, 3022, 3035, 3060, 3090



cod. **3366**
- gruppo piedini per sostegni
3019, 3023, 3091
- *feet group for stands*
3019, 3023, 3091



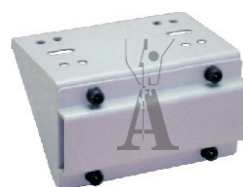
cod. **3360**
- snodo plastica
- *plastic joint*



cod. **3361**
- snodo metallo
- *metal joint*



cod. **3372**
- traversa portamotore
- *motor cross bar*



cod. **3370**
- staffa portamotore
- *motor bracket*



cod. **3596**
- staffa portainterruttore
- *switch carrier*

Particolari per vecchi sostegni

Old stands spare parts



cod. **3391**
- biella in legno
- *wood connecting rod*



cod. **3380**
- molla scartacchingia
- *spring*



cod. **3381**
- vite per pedana
- *screw for footboard*



cod. **3382**
- dado per vite 3381
- *nut for screw 3381*



cod. **3383**
- vite per laterali
- *screw for*