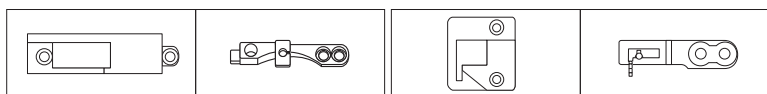
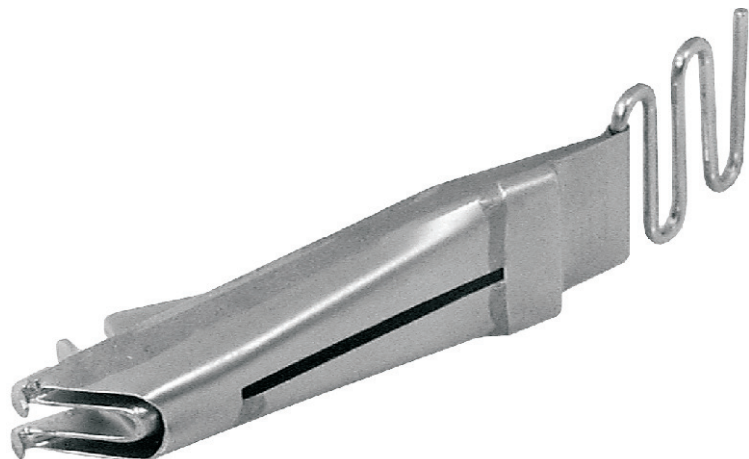
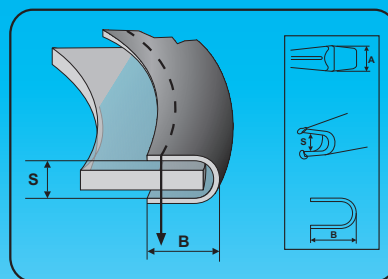


## F29000 BORDATORE AD ANGOLO A PIEGA SEMPLICE (95°)

*Per macchine triplice trasporto*  
*For walking foot machines*



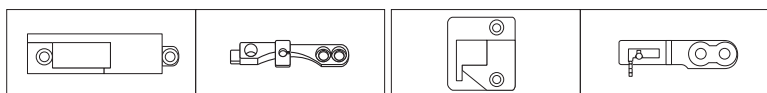
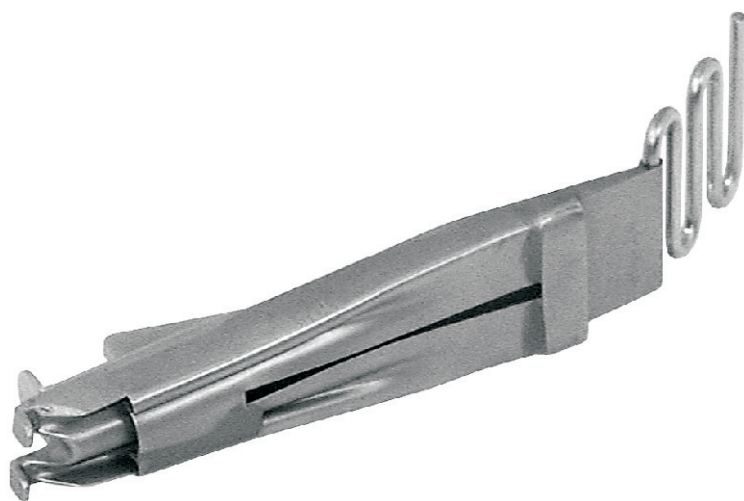
RIGHT ANGLE SINGLE BINDER (95°)



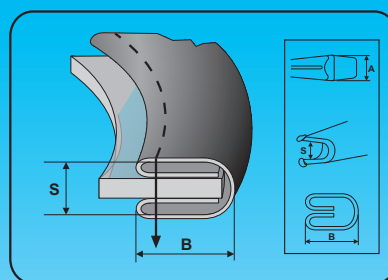
Codice	Entrata (A) (tape size)		Lav. finito (B) (finished size)		Spessore (S) (thickness)	
	(mm)	(inch)	(mm)	(inch)	(mm)	(inch)
F29000/12x6x3	12	31/64	6	1/4	3	1/8
F29000/14x7x4	14	9/16	7	9/32	4	5/32
F29000/16x8x4	16	5/8	8	5/16	4	5/32
F29000/18x9x4	18	23/32	9	23/64	4	5/32
F29000/19x9x6	19	3/4	9	23/64	6	1/4
F29000/20x10x4	20	25/32	10	25/64	4	5/32
F29000/20x10x6	20	25/32	10	25/64	6	1/4
F29000/22x11x4	22	7/8	11	7/16	4	5/32
F29000/22x11x6	22	7/8	11	7/16	6	1/4
F29000/24x12x4	24	15/16	12	15/32	4	5/32
F29000/24x12x6	24	15/16	12	15/32	6	1/4
F29000/26x13x4	26	1-1/32	13	33/64	4	5/32
F29000/26x13x6	26	1-1/32	13	33/64	6	1/4
F29000/28x14x6	28	1-1/8	14	9/16	6	1/4
F29000/30x15x6	30	1-3/16	15	19/32	6	1/4
F29000/35x17x6	35	1-3/8	17	21/32	6	1/4
F29000/40x20x6	40	1-9/16	20	25/32	6	1/4

## F29002 BORDATORE AD ANGOLO DOPPIA PIEGA (95°)

*Per macchine triplice trasporto*  
*For walking foot machines*



RIGHT ANGLE DOUBLE BINDER (95°)



Codice	Entrata (A) (tape size)		Lav. finito (B) (finished size)		Spessore (S) (thickness)	
	(mm)	(inch)	(mm)	(inch)	(mm)	(inch)
F29002/20x5x4	20	25/32	5	3/16	4	5/32
F29002/22x6x4	22	7/8	6	1/4	4	5/32
F29002/25x7x4	25	1	7	9/32	4	5/32
F29002/25x7x5	25	1	7	9/32	5	3/16
F29002/25x7x6	25	1	7	9/32	6	1/4
F29002/28x8x4	28	1-1/8	8	5/16	4	5/32
F29002/28x8x6	28	1-1/8	8	5/16	6	1/4
F29002/30x9x4	30	1-3/16	9	23/64	4	5/32
F29002/30x9x6	30	1-3/16	9	23/64	6	1/4
F29002/35x11x5	35	1-3/8	11	7/16	5	3/16
F29002/35x11x7	35	1-3/8	11	7/16	7	9/32
F29002/40x13x7	40	1-9/16	13	33/64	7	9/32